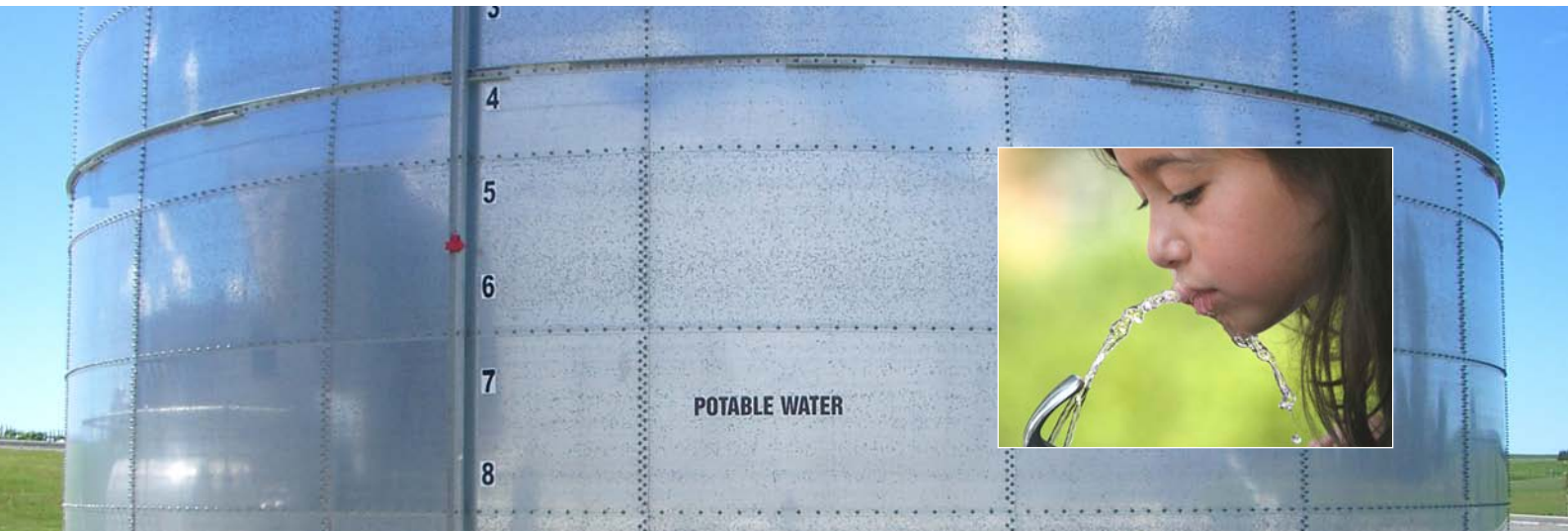


the
**TASMAN
TANK CO.**



The Tasman Tank Co. is pleased to present our comprehensive range of potable water storage solutions for municipal water supply.

Our company objective is “quality tanks and storage solutions at competitive prices”.

Our specialised tanks for municipal potable water are:

Series TS600	Circular Bolted Galvanised Liner Tank
Series TS700-SS	Circular Bolted Stainless Steel Tank
Series TC-D103	Circular Bolted RTP Proprietary FUSION Coated Tank

‘BUILT BY PEOPLE FOR PEOPLE’



The Tasman Tank Co. offer our clients 25 years industry experience, specialising in tank design, manufacturing

and installation both locally and internationally. Our focus on quality control ensures that the highest standards are maintained.

Design certification and warranty on all tanks is provided to ensure customer satisfaction.

Tasman Tanks are designed for up to a 50 year design life.

Our Occupational Health & Safety is key in our company:

- All fatalities and injuries are preventable.
- No task is so important that it cannot be done safely.
- All hazards can be identified and their risks managed.
- Everyone has a personal responsibility for the safety and health of themselves and others.

Our management team stay directly involved throughout the entire process. A senior staff member is always available to go through quotations and assist with any queries you may have regarding your project.

The Tasman Tank Co. prides itself on providing a very personal yet professional service to all our clients. With our diverse range of quality products, our field installation capabilities and our customer service, we remain unmatched in the industry.

Full turn-key systems are available, covering foundation design and construction, filtration systems, pumps, valves and pipework. - "The Complete Solution".



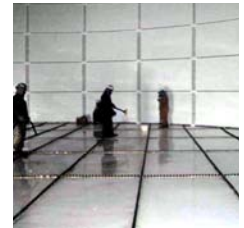
Old technology meets new Tasman Technology

TS600 CIRCULAR LINER TANK

The TS600 Circular tank is a bolted steel design incorporating an internal membrane liner to provide the water containment. The tanks are constructed onsite, by our trained erection crews, using our hydraulic jacking system.

Specification options available include:

- Wall sheet material – Galvabond, hot dip galvanised steel or stainless steel.
- Internal membrane liner: PVC, Aeon, Butyl Rubber, Polypropylene or Strongline.
- Standard mono-clad roof structure and sheeting or long-life Zam structure & Ultra sheeting, aluminium also available. All roofs are designed to AS/NZS1170.2.
- Tank nozzles can be either stainless steel or epoxy coated conforming to drinking water standards including AS/NZS4020:2002.
- Access ladders or stairways are supplied on all tanks. External ladder components - hot dip galvanised, internal ladders - stainless steel or epoxy coated.
- To meet environmental and aesthetic requirements we can custom the external finish to suit. There is a huge palette of colours available for powder coating walls and the full Colorbond range is available for roof sheeting.



TS700-SS CIRCULAR BOLTED STAINLESS STEEL TANK

Designed, fabricated and constructed with the same stringent standards as the TS600, however no internal containment liner is used. This tank incorporates a fully bolted stainless steel floor and walls.

- Wall and floor sheet either grade 316 or 304 stainless steel.
- Roofing material (isolated from the water) either Zinalume, Galvanised Zam, Ultra, Stainless Steel or Aluminium.
- Internal nozzles and ladders are stainless steel. External ladders are hot dip galvanised.
- To meet environmental and aesthetic requirements we can customise the external finish to suit. There is a huge palette of colours available for powder coating walls and the full Colorbond range is available for roof sheeting.



The Tasman Tank Co. through its association with the Tank Connection Affiliate Group brings you the most diverse range of bolted storage tanks.

TC-D103 Circular Bolted Steel RTP™ Proprietary Fusion Coated Storage Solutions

RTP bolted tanks feature exact manufacturing tolerances and the top rated Fusion 7000 FBE™ powder coat process available for bolted tank construction worldwide.

The Tasman Tank Co. also provides complete turnkey field installation service, utilizing direct factory crews and supervisors. Field installation is accomplished utilizing a synchronized, hydraulic screw jack process, which allows field crews to install tanks/silos at grade level. This process receives the highest industry ratings for quality control and safety in the field.

For all of your municipal storage requirements **The Tasman Tank Co.** offers unlimited configurations in bolted tank construction from ground reservoirs to elevated water tanks. Standard liquid tank capacities range from 100m³ to 30,000m³.

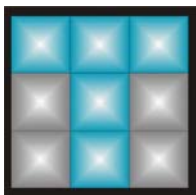
In all cases, RTP tank construction outperforms other types of bolted tank construction through its superior design, proprietary fusion coated system and safe field installation processes.

**TANKS UP TO
30 MEGA LITRES**

1. RTP Construction Potable Water
2. Bolted Steel Floor
3. RTP Construction - Potable Water
- 4 million gallons/ 15,000 m³

For municipality and potable water containment. We provide the **COMPLETE PERFORMANCE PACKAGE:**

- Specify
- Design
- Manufacture
- Field Construction
- "Golden Rule"
Customer Service



**the
TASMAN
TANK CO.**

Head Office:

The Tasman Tank Co.
PO Box 937
Kings Langley, NSW 2147
Phone: +61 2 9831 1444
Fax: +61 2 9831 1422
Email: info@tasmantanks.com.au

NZ Head Office:

PO Box 10,000
Christchurch NZ
Phone: +64 3 379 9444
Fax: +64 3 379 9445
Email: salesnz@tasmantanks.com.au

Sales Office:

Phone: 1800 826 526 or (NZ) 0800 826 526
Email: sales@tasmantanks.com.au

www.tasmantanks.com.au